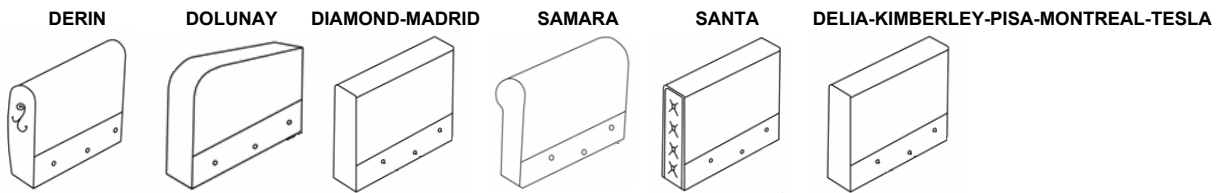


Montaj Talimatı / Assembly Instructions / Montageanleitung

ALYA
DERIN
DELIA
DOLUNAY
DIAMOND
KIMBERLY
MADRID
MONTREAL
PISA
SAMARA
SANTA
TESLA

	Kelebek somun Butterfly-screw Flügel-Mutter			13 cm'lik vida Bolt- 13 cm Schraube- 13 cm			Ayak için vida Bolt for legs Schraube für Füße			Orta ayak Middle-leg Stützfuss			Köşeli ayak Square leg Fuss (eckig)			Kırlent Cushion Kissen		
	3	2	1	3	2	1	3	2	1	3	2	1	3	2	1	3	2	1
KIMBERLY	6	6	6	6	6	6	12	12	12	1	-	-	4	4	4	2	2	-
TESLA	6	6	6	6	6	6	12	12	12	1	-	-	4	4	4	2	2	-
DIAMOND	6	6	6	6	6	6	12	12	12	1	-	-	4	4	4	2	2	-
DERIN	6	6	6	6	6	6	12	12	12	1	-	-	4	4	4	2	2	-
SANTA	6	6	6	6	6	6	12	12	12	1	-	-	4	4	4	2	2	1
DOLUNAY	6	6	6	6	6	6	12	12	12	1	-	-	4	4	4	2	2	-
ALYA	6	6	6	6	6	6	8	8	8	1	-	-	4	4	4	2	2	-
DELIA	6	6	6	6	6	6	8	8	8	1	-	-	4	4	4	2	2	-
MADRID	6	6	6	6	6	6	8	8	8	1	-	-	4	4	4	-	-	-
MONTREAL	6	6	6	6	6	6	8	8	8	1	-	-	4	4	4	-	-	-
PISA	6	6	6	6	6	6	6	6	6	1	-	-	4	4	4	2	2	1
SAMARA	6	6	6	6	6	6	12	12	12	3	2	2	4	4	4	5	4	-

3= 3.Seater / 3.Sitzer / Kanape - 2= Loveseat / 2.Sitzer / İkili - 1= Armchair / Sessel / Tekli Koltuk



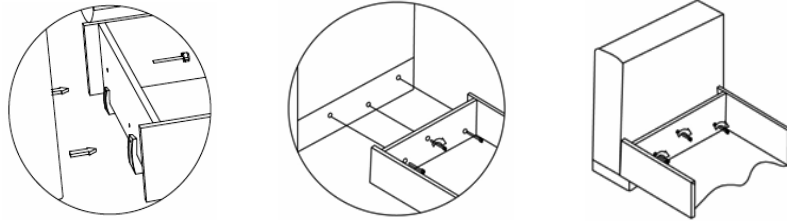
1 Kol Montajı / Assembling Arm / Armlehnen-Montage

TR Herbir kola üçer adet 13 cm'lik vidayı vidalayınız. Kol ve gövdeyi delikler bir araya gelecek şekilde birleştirip, vidaları sandık kısmındaki deliklerden geçirerek kelebek somunları sıkıştırınız.

EN Screw the 13 cm bolts through the holes inside of the arm. Align the arm with the sofa-side.

Fix the opposite side of the screws through the holes inside of the box. Insert butterfly-screws on them and tighten.

D Schrauben Sie an je Armlehne 3x 13 cm lange Schrauben an. Bringen Sie die Armlehne so an den Bettkasten an, dass die Schrauben an den Armlehnen durch die Löcher am Bettkasten durchgehen und befestigen Sie diese mit je einer Flügelmutter.

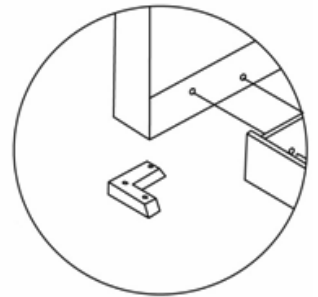


2 Köşe Ayak Montajı / Assembling of the Corner-Leg / Eckfuss-Montage

TR Ayakları kolların altında bulunan deliklere vidalayınız.
Rain ve Ada modelinde köşe ayakları vida ile vidalayınız

EN Assemble corner-legs through the holes under the arms.
By models "Rain" and "Ada" mount the legs with screws.

D Schrauben Sie die Füße an die Löcher unten an der Armlehne an.
Befestigen Sie die Eck-Füße bei den Modelle und "Rain" mit jeweils einer Schraube.



3 Orta Ayak Montajı / Assembling Middle-Leg / Stützfuss-Montage

TR Orta ayağı, kanepenin alt kısmının ortasındaki deliğe monte ediniz.

EN Assemble the Middle(Round)-Leg to the slot on the bottom of the sofa-box.

D Befestigen Sie den Stützfuss unten in das Loch mitte des 3.Sitzers.

